

CELEBRATING
ANNIVERSARY

23rd

· 2002-2025 ·



Healthier your life

Alnno / Series

www.saikangmedical.com

SAIKANG / Medical®

LED OPERATION LAMP



SHADOW MANAGEMENT

Everything has been designed to enable the medical team to focus exclusively on the surgical operation thanks to the perfect shadow dilution. A large number of individual divergent light beams create a complete light patch, ensuring that the light field will remain circular and shadow-free. Alno Light20 provides the best illumination, even when surgeons are blocking the LEDs.

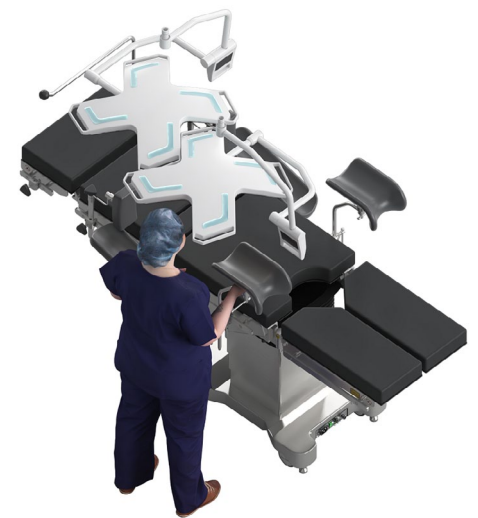
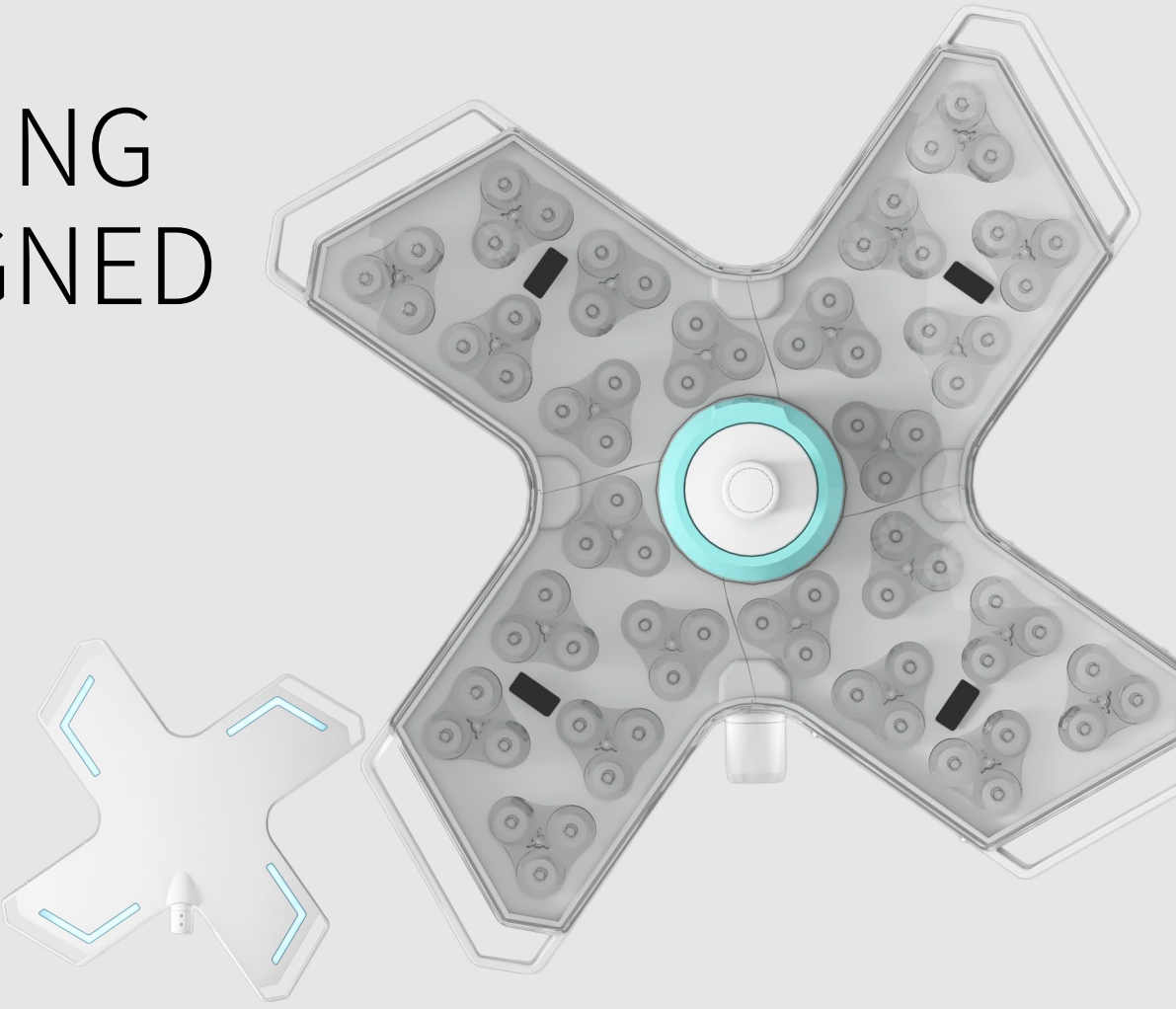
SHAPING DESIGNED

The head of the lamp is windmill-shaped, Saikang's unique (appearance patent) design.

The back is equipped with a soft ambient light.

The top offers a soft ambient light, simple and stylish while also being useful for low-light surgery (laparoscopic).

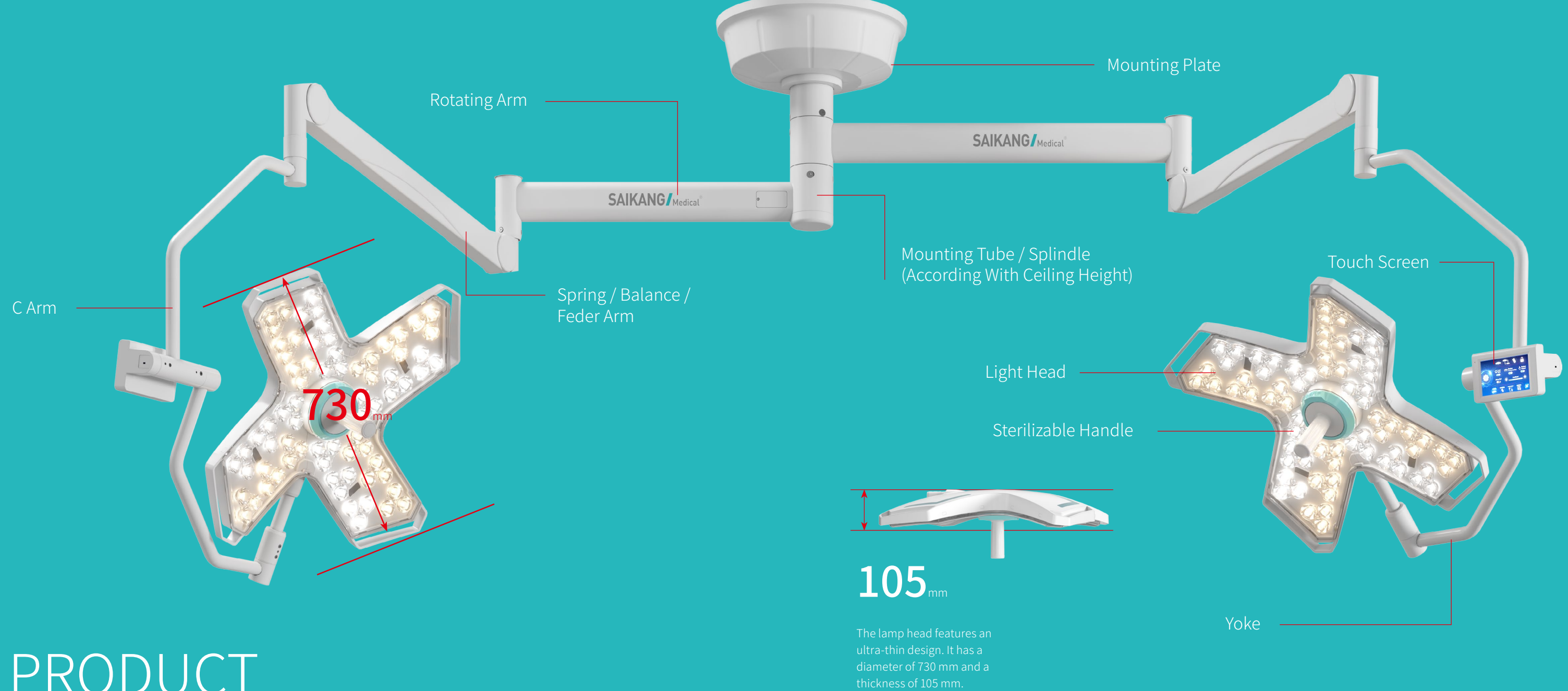
Exceeding the infection control standards of modern operating rooms.



User friendly for multiple surgeons and nurses at the same time



Head insert design: No heating over the surgeons head (max. Allow is 1C°)



PRODUCT STRUCTURE

MATERIAL

The shell is made of ABS+PC material, making the whole product lightweight.

The internal light source components are composed of an ABS skeleton and an aluminum base plate structure, which provides excellent heat dissipation performance.

The weight of the lamp head (with the C-arm) is 10 kg, and the weight of the lamp head alone is only 5.2 kg, which is less than half of the existing models. This makes it easy to maneuver and extends the lifespan of the arms.

STRUCTURAL TECHNOLOGY

The lamp head adopts an integrated screw-free design, equipped with an integrated operation handle with the lamp head cover, and there is no splicing gap as a whole, which can effectively avoid contaminant residues, and can be directly wiped for disinfection, significantly reducing cleaning difficulty.

SPRAY COATING PROCESS

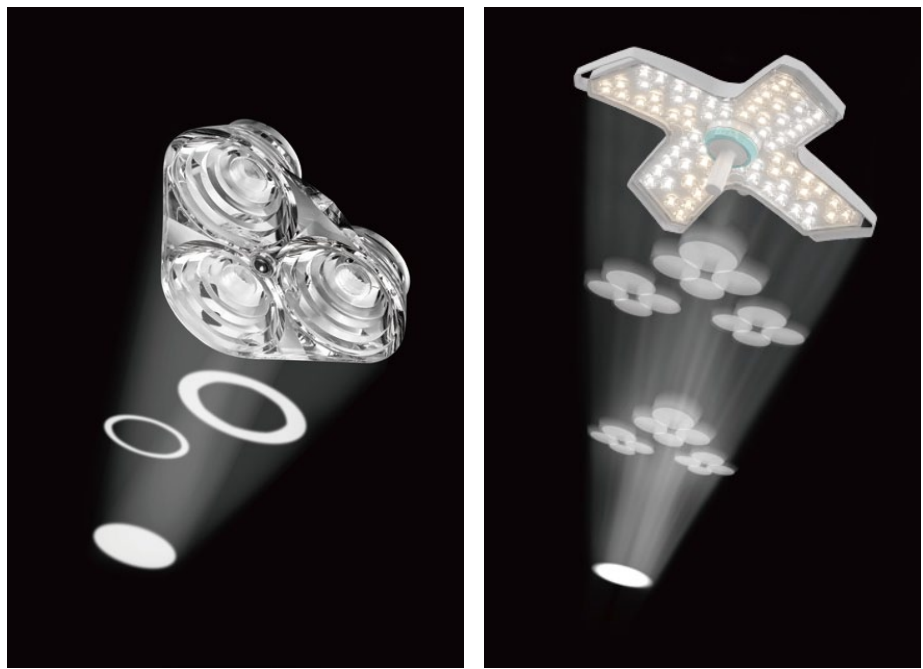
The entire surface is coated with environmentally friendly antibacterial plastic powder, certified by RoHS. A high-voltage electrostatic spraying process is used to ensure antibacterial properties.

LIGHT-TRANSMITTING COVER

The curved, light-transmitting cover is made of PC material using an integrated molding process. It is heat-resistant up to 120-135°C, with impact resistance more than 10 times that of ordinary acrylic. It also offers strong chemical corrosion resistance, making it suitable for frequent wiping and disinfection.



FUNCTIONALITY

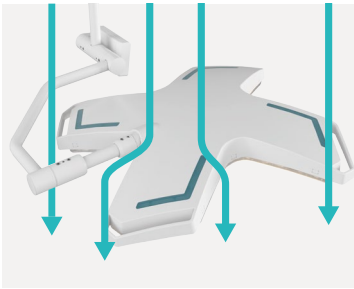
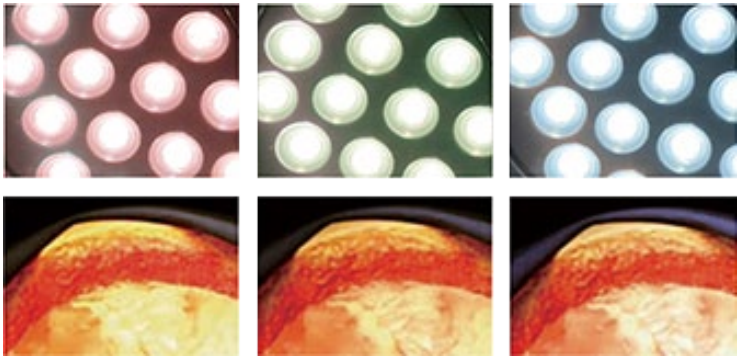


It features original imported LED lamp beads from OSRAM, Germany, with an average lifespan exceeding 60,000 hours. Each lamp head is equipped with 24 sets of triangular lenses and 72 lamp beads. The use of triangular lenses enables multi-layer light spot superposition, ensuring uniform illumination.

Bulb
OSRAM Bulb **60,000 hours**

Using an advanced LED cold light source, the illuminance reaches up to 160,000 Lux, and it can achieve 10-level adjustment. The color temperature ranges from 3500K to 5500K. While meeting the high - illuminance requirements, it can adjust the lighting parameters according to the different needs of surgeons, making the surgeons' perception of light soft and non-glare.

Color temperature&illumination
160,000 Lux
3500K - 5500K



Integrated screw-free design,
Laminar flow design,
Antibacterial coating.

Induction control design

SPRING ARM

The standard spring arm is domestically manufactured, offering stable performance with an upward and downward folding angle of $\geq +45^\circ / -45^\circ$.

An imported spring arm of the Ondal brand is optionally available. The load capacity can reach 21/40 kg, with an upward and downward displacement of 1288 mm and an angle range of $-70^\circ / +45^\circ$.



The centrally located operating handle is detachable. It is made of PPSU material, which can withstand a temperature of not less than 134°C and a high pressure of not less than 205.8 kPa, making it suitable for sterilization by high-temperature and high-pressure steam.

Operating handle
PPSU
 $\leq 134^\circ\text{C}$
 $\leq 205.8\text{kPa}$



STERILE CONTROL



Integrate the most commonly used adjustment functions into the sterile handle to improve surgical efficiency.

It can adjust the color temperature, illuminance, and the size of the light spot, and also adjust the brightness of the soft ambient light.



INTELLIGENT SHADOW MANAGEMENT

Sensors are installed in various parts inside the lamp head. When it detects that a certain part is blocked, the remaining lamp beads can gradually and actively supplement the light to ensure the illumination of the surgical field.



5-INCH EXTRA-LARGE LCD TOUCH SCREEN

It is equipped with a 5-inch extra-large LCD touch screen and ultra-simple operation interface design:
±30° display angle adjustment for different user heights.

Seamless design for easy disinfection.

LIGHTING MODE

It has three lighting modes (standard, endoscopic, and low-light), as well as red light compensation, green light compensation, and shadow compensation.



STANDARD

ENDOSCOPIC

LOW-LIGHT

OPTIONAL

Diversified control methods

Mutual control of dual lamp heads (Alno Light20)

In the case of a dual-lamp head setup, each lamp head's controller can adjust the settings of the other.



Gesture sensing

By gesture-sensing system, it can achieve touch-free unlocking of the screen and adjustment of the central illuminance, which is convenient and quick.



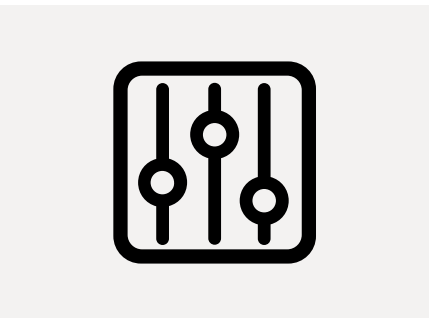
Centrally installed wireless camera shooting



Storage battery



7-inch wired wall-mounted controller



Assisted voice control

It supports assisted voice control through specified wake-up words and command words.

Voice control is supported in both Chinese and English.



Wireless terminal control

It adopts the 2.4G encrypted wireless transmission technology, with a transmission distance of not less than 20 meters, ensuring safety and reliability. It can also be installed as a wall control device.



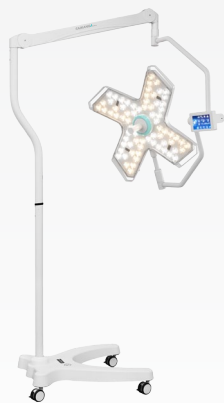
Alno Light20



Alno Light10



Alno Light M

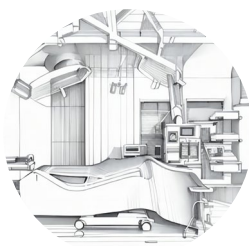


TECHNICAL SPECIFICATIONS

Model	Alno Light20	Alno Light10	Alno Light M
5-inch full-screen touch controller;	●	●	●
Electronic focusing component;	●	●	●
Red light compensation;	●	●	●
Green light compensation;	●	●	●
Three lighting modes: standard, endoscopic, and low-light;	●	●	●
Shadow compensation	●	●	●
Central illuminance (Ec)	40000-160000 lx (10 levels)	40000-160000 lx (10 levels)	40000-160000 lx (10 levels)
Spot diameter (d10)	200-300mm (5 levels)	200-300mm (5 levels)	200-300mm (5 levels)
Spot distribution (d50/d10)	55%	55%	55%
Depth of the light column (60% of Ec)	700mm	700mm	700mm
Color temperature (Tc)	3500-5500K (11 levels)	3500-5500K (11 levels)	3500-5500K (11 levels)
Colour rendering index (Ra)	98	98	98
Maximum total irradiance (Ee)	≤550 W/m ²	≤550 W/m ²	≤550 W/m ²
Radiant energy (Ee/Ec)	≤3.5mW/(m ² .lx)	≤3.5mW/(m ² .lx)	≤3.5mW/(m ² .lx)



CONSTANT INNOVATION



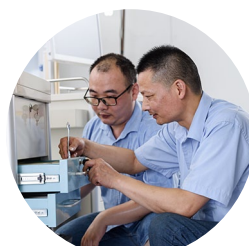
Design



Research



Manufacturing



Maintenance



Service

WORLDWIDE BRANCHES

South America Branch

Saikang Medical Technology, Inc
W3400 Corrientes, Argentina
TEL: +55 (11) 2758-0438
Rua Universal, Hollywood,
São Bernardo do Campo,
Brazil
TEL: +55 (11) 2758-0438

East Africa Branch

Saikang Medical Technology Ltd
Mezzanine Floor, Taj Tower,
upper hill, nairobi, Kenya
TEL: +254714084806

South East Asia Branch

Saikang Medical (Philippines) Company Limited
Manila, The Philippines
TEL: +63 953 044 7864

US Branch

Healthward Technology, INC
17800 CASTLETON ST STE 180,
CITY OF INDUSTRY CA 91748
TEL: +1 (603)416-3063

Russia Branch

LLC 'SAIKANG'
454004, Russian Federation,
Chelyabinsk,
Universitetskaya
Naberezhnaya, Russia
TEL: +7 (919)300-00-06

Mid East Branch

Saikang Medical Supplies (Mid East) LLC
Musaffah
P.O Box 53200, Abu Dhabi,
UAE
Tel: +971 585710652

SAIKANG Medical

Jiangsu Saikang Medical Equipment Co., Ltd.
STOCK CODE: 870098

 No. 35, Lehong Road · Zhangjiagang (Jiangsu) · China
 +86 18021231901 ·  24/7
 export@saikangmedical.com
 www.saikangmedical.com



Company video



General catalogue