



A301

ELECTRIC OPERATING TABLE

Registration code: SKL-A



SAIKANG / Medical

Healthier
your life

A301

FEATURES AND HIGHLIGHTS



Technical parameters

▪ Length/Width	2000 × 555 mm ± 10 mm
▪ Height Elevating/Lowering	730-980 mm ± 10 mm
▪ Forward Tilt/Backward Tilt	24° ± 3° / 24° ± 3°
▪ Left Tilt/Right Tilt	23° ± 3° / 23° ± 3°
▪ Backrest (Up/Down)	66° ± 3° / 22° ± 3°
▪ Head Section (Up/Down)	30° ± 3° / 90° ± 3°
▪ Leg Section Down	90° ± 3°
▪ Leg Section Outward	90° ± 3°
▪ Kidney Bridge	110 mm ± 5 mm
▪ Horizontal Sliding	350 mm ± 5 mm

Standard Accessories

<input checked="" type="checkbox"/> Anesthesia Screen	1 unit
<input checked="" type="checkbox"/> Shoulder Supports	1 pair
<input checked="" type="checkbox"/> Arm Rests	1 pair
<input checked="" type="checkbox"/> Lumbar Supports	1 pair
<input checked="" type="checkbox"/> Leg Supports	1 pair
<input checked="" type="checkbox"/> Foot Plates	1 pair

Material

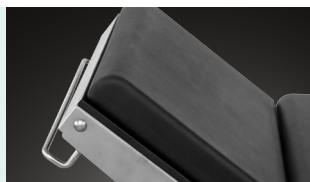
The base material for the table is high thickness 304 stainless steel, seamless welding by robot, with modern appearance and more stable.

**Mattress**

Polyurethane foam mattress, waterproof and seamless, avoid liquid in. The connection between table and mattress is buckle joint, easy to disassemble and install, easy to clean.

**Head plate**

Head plate is with imported gas spring for easy control.

**Kidney bridge**

Manual kidney bridge, operate by head side rocker, more convenience.

**Horizontal sliding**

Extra horizontal sliding, distance 350mm high strength phenolic resin table surface, C-arm and X-ray compatible.

**Dual control system**

All functions controlled by both hand controller or control panel on table base column. With action LCD display on hand controller, easy to operate. With control panel on table base column, in case of emergency hand controller failure.

**Leg plate**

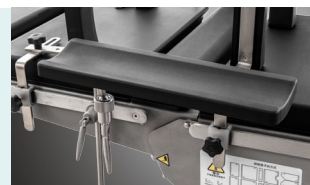
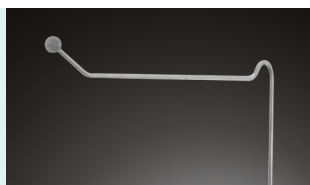
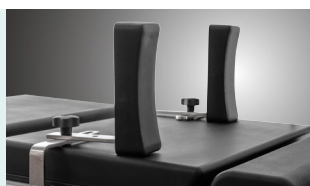
Leg plate with imported gas spring for easy control. Disassembled type leg plate.

**Brake**

Pedal brake, easy to move and lock. Pedal down to release the inner castors down. Pedal up to retract the castors, which enables the table locked on the floor.

**Battery could support**

Battery could support about 80-120 complete operation cycles. Working time could be last for one week according to useage and help to keep the operating table running in the event of power failure.

**Armrest****Anesthesia Frame****Leg Crutches****Shoulder Support****Body Supporter**

Professional functions

Lowest position of table top

730mm



Highest position of table top

980mm



Back plate up/down

22°-66°



Kidney bridge elevation

0-110mm



Backward Tilt

0°-24°



Forward Tilt

0°-24°



Right lateral tilt

0°-23°



Left lateral tilt

0°-23°



Head plate upward

0°-30°



Head plate downward

0°-90°



Leg section evagination

0°-90°



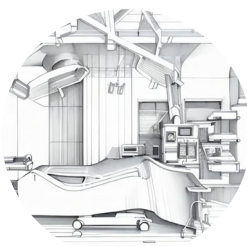
Leg plate down

0°-90°





CONSTANT INNOVATION



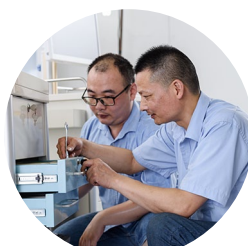
Design



Research



Manufacturing



Maintenance



Service



WORLDWIDE BRANCHES

European Branch

Saikang Medical Portugal Office

Av. da Liberdade, nº 101
8150-101
São Brás de Alportel
Portugal
TEL: +351 289 090 212

Russian Branch

LLC 'SAIKANG'

454004, Russian Federation,
Chelyabinsk,
Universitetskaya
Naberezhnaya, Russia
TEL: +7 (919)300-00-06

South America Branch

Saikang Medical Technology, INC

Rua Lauro Muller 116, Sala
1503 - Botafogo,
Rio de Janeiro -
RJ, 22290-160
E-mail: mehecobrasil@
gmail.com

East Africa Branch

Saikang Medical Technology Ltd

Mezzanine Floor, Taj Tower,
upper hill, nairobi, Kenya
TEL: +254714084806

South East Asia Branch

SAIKANG Medical (Thailand) Co., Ltd.

Ample Tower 909 Room 11/3
Debaratana Road,
Bangna Nuea, Bangkok
10260 Thailand
TEL: +66-936-569469

US Branch

Healthward Technology, INC

17800 castleton st ste 180,
Los Angeles
TEL: +1 (603) 416-3063

SAIKANG Medical

Jiangsu Saikang Medical Equipment Co., Ltd.
STOCK CODE: 870098

📍 No. 35, Lehong Road · Zhangjiagang (Jiangsu) · China

☎ +86 18021231901 · 🕒 24/7

✉ export@saikangmedical.com

🌐 www.saikangmedical.com



Company video



General catalogue